



PORTOCER
TILES

TRANSFORMING ORGANIC NUANCES INTO ARTISTIC **INNOVATION**

MatryCER
COLLECTION

GLAZED
VITRIFIED
TILES

600x1200mm
9mm

Fresh Innovation Backed By Expertise

Portocer Tiles is a trusted name in the ceramic tile industry, renowned for offering premium GVT/PGVT tiles that blend durability, elegance, and innovation. Combining industry knowledge and the latest innovation, we specialise in providing an extensive range of stylish designs and finishes, tailored to elevate spaces worldwide.

Our dedication to advanced technology and craftsmanship ensures each product meets the highest standards of quality and functionality. At Portocer, we take pride in delivering exceptional products that inspire timeless beauty and stand the test of time.

+91 90817 11150

35+ Surfaces

// 07 SIZES
// 10 CATEGORIES

PolīCER
COLLECTION

VantaCER
COLLECTION

MattCER
COLLECTION

FlickCER
COLLECTION

SilkenCER
COLLECTION

Gr!tCER
COLLECTION

OmniCER
COLLECTION

MatryCER
COLLECTION

SoftCER
COLLECTION

GalaCER
COLLECTION

ShapeCER
COLLECTION

GrípCER⁺
COLLECTION

PORTOCER
TILES



Size: **600x1200mm**
Surface: **MatryCER**
Thickness: **9mm**

GLAZED
VITRIFIED
TILES



MatryCER
COLLECTION

Witness as raw beauty is refined to create finesse where colors, patterns, and textures shine with elegance. These surfaces are an ode to natural beauty when viewed through the lens of artistry, offering a magical rendition that highlights your spaces with gleaming grace.

Each piece is transformed into richly detailed artwork that suits the tastes of contemporary interiors that admire grandeur and demand glamour. Celebrate this union of nature and artistry in your spaces, creating a look of sophistication that redefines class.



Stories that
are etched
in stone



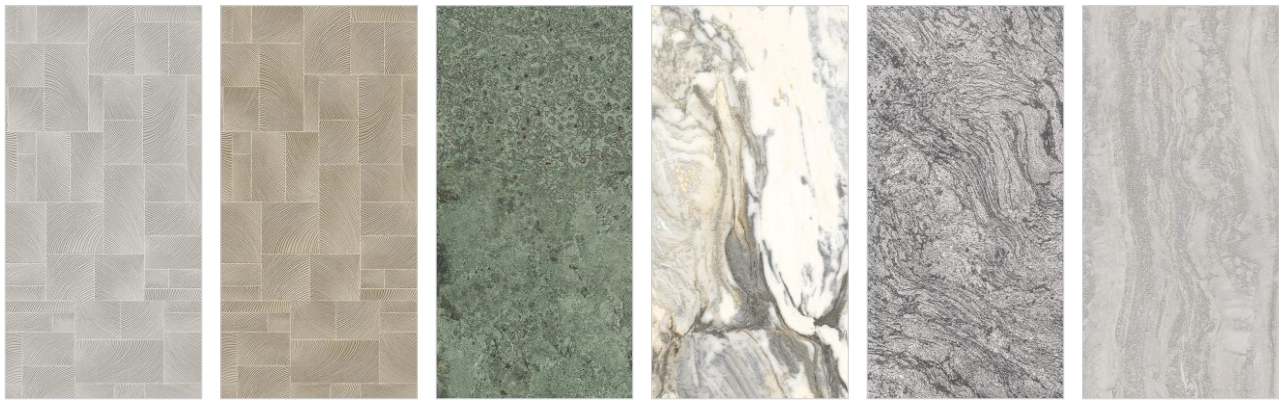
www.portocertiles.com



The phrase "Italian Elegance" carries a history of art, sophistication, and refinement. It embodies the admiration for beauty and the ambition to create something better that not only awes but also inspires.

Taking this philosophy at heart, Portocer strives to deliver an extensive range of innovative surface solutions that celebrate the past, elevate the present, and set the tone for a better future. Every space carries stories, and we hope to celebrate each one.

MatryCER
9mm



Arbor Block Ice Arbor Block Linen Bora Green Cascade Golden Metiore Stone Nicholas Travertine Ash



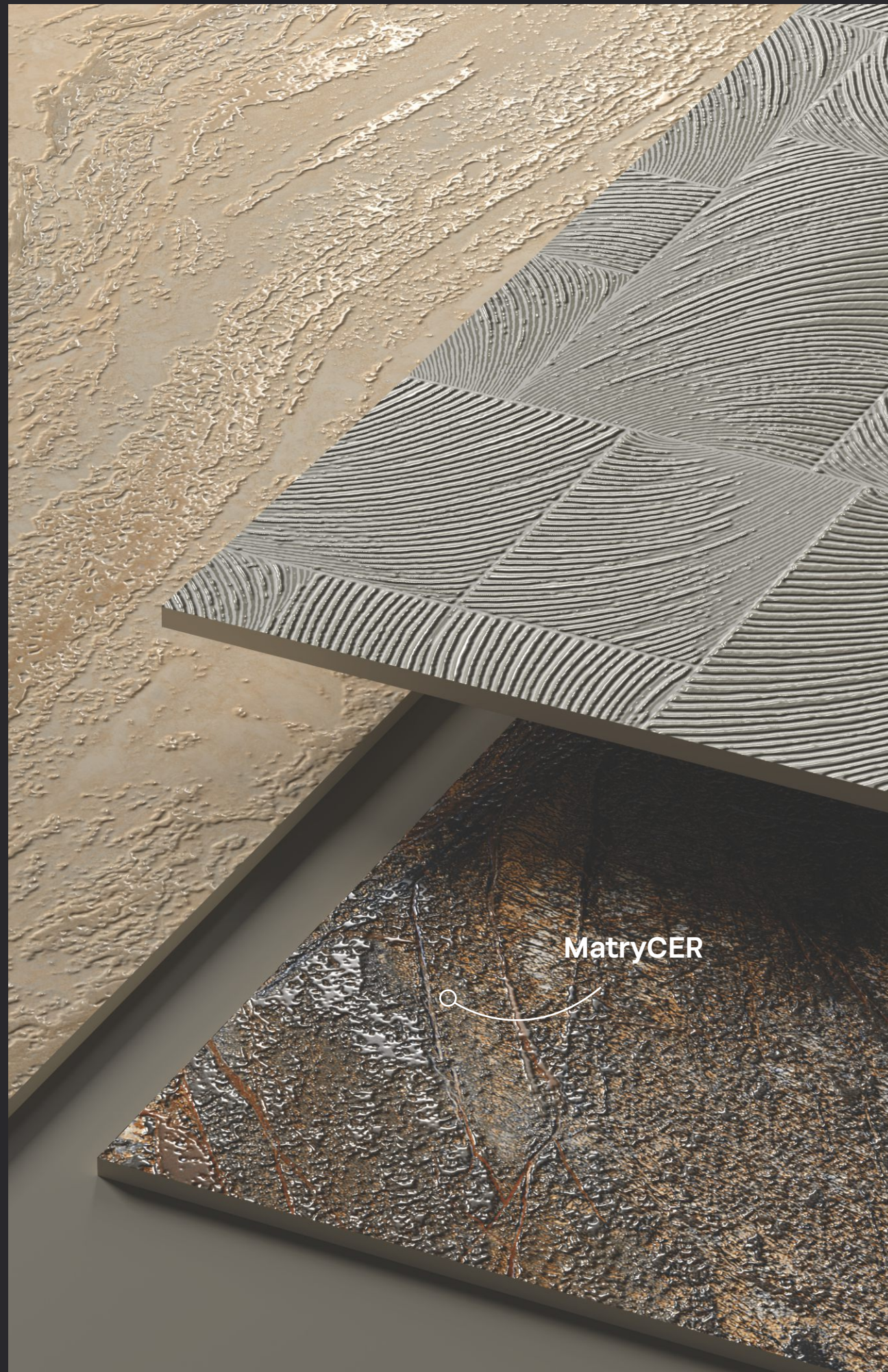
Nicholas Travertine Sand Nicholas Travertine Stone Olympian Gold Sonar Dove Techtonic Earth



GLAZED
VITRIFIED
TILES



MatryCER
COLLECTION



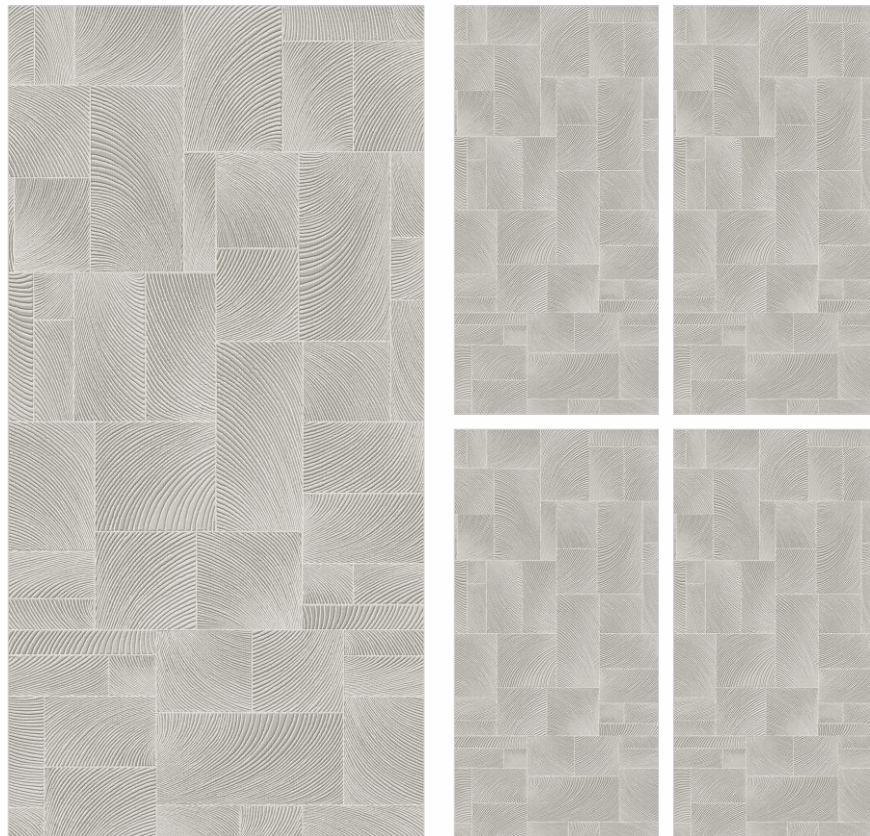
Size: **600x1200mm**

Surface: **MatryCER**

Thickness: **9mm**

Dive into the simplistic beauty of matt surfaces that effortlessly create a sense of modernity and sophistication. These dynamic surfaces along with their 9mm thickness turn to be a reliable & practical choice for your space. The versatile color range makes this range a perfect palette for your artistic space. seamlessly blending style with utility.

www.portocertiles.com



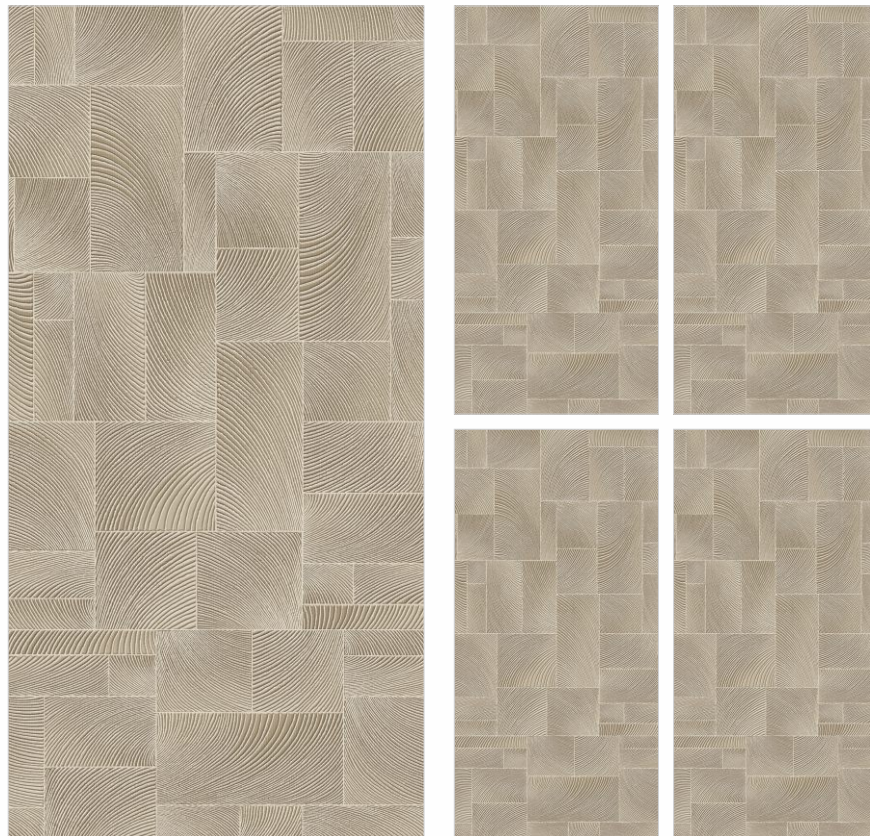
Arbor Block Ice

Size: **600x1200mm**
Surface: **MatryCER**
Thickness: **9mm**
Random: **1**

←
Back to
Index

CLICK FOR
VIRTUAL
360°





Arbor Block Linen

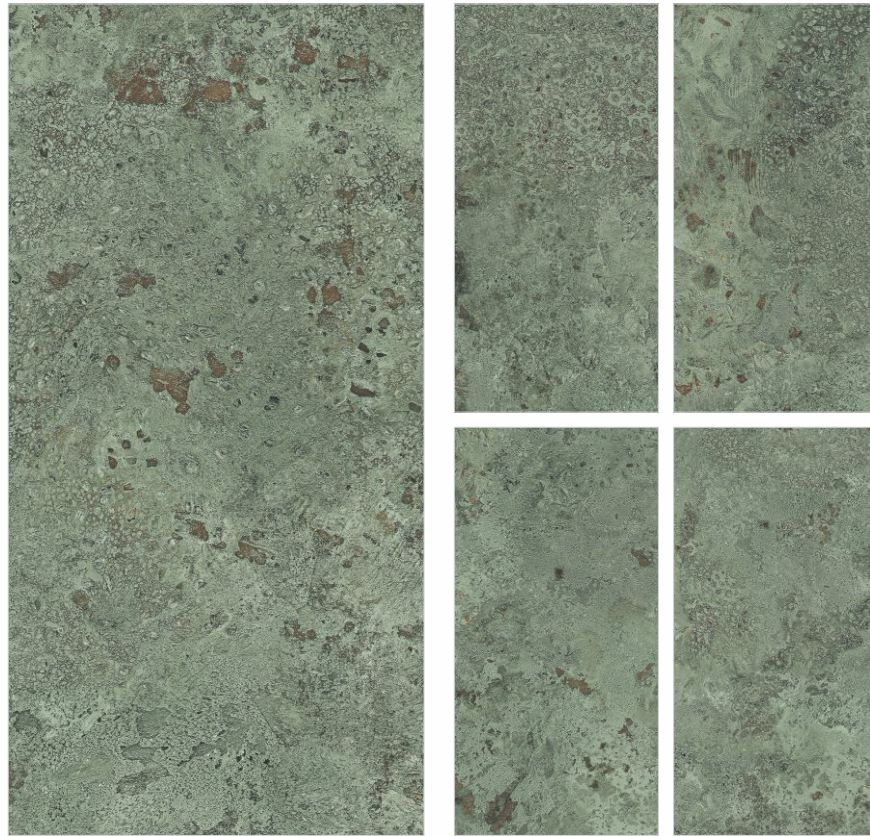
Size: **600x1200mm**
Surface: **MatryCER**
Thickness: **9mm**
Random: **1**



Back to
Index

CLICK FOR
VIRTUAL
360°





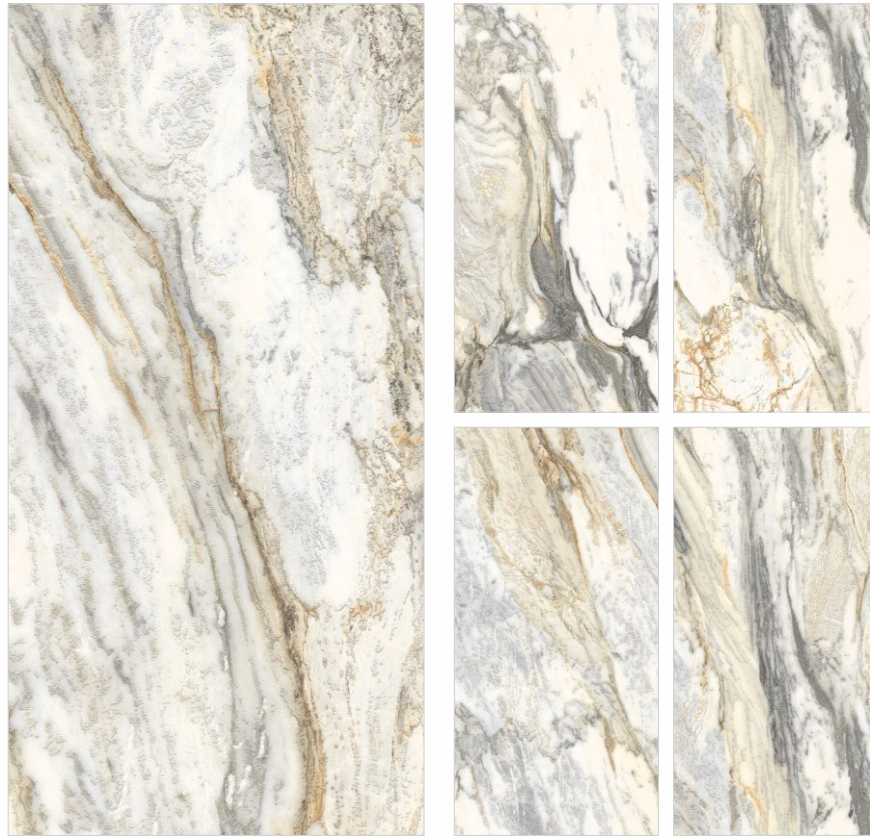
Bora Green

Size: **600x1200mm**
Surface: **MatryCER**
Thickness: **9mm**
Random: **5**

←
Back to
Index

CLICK FOR
VIRTUAL
360°





Cascade Golden

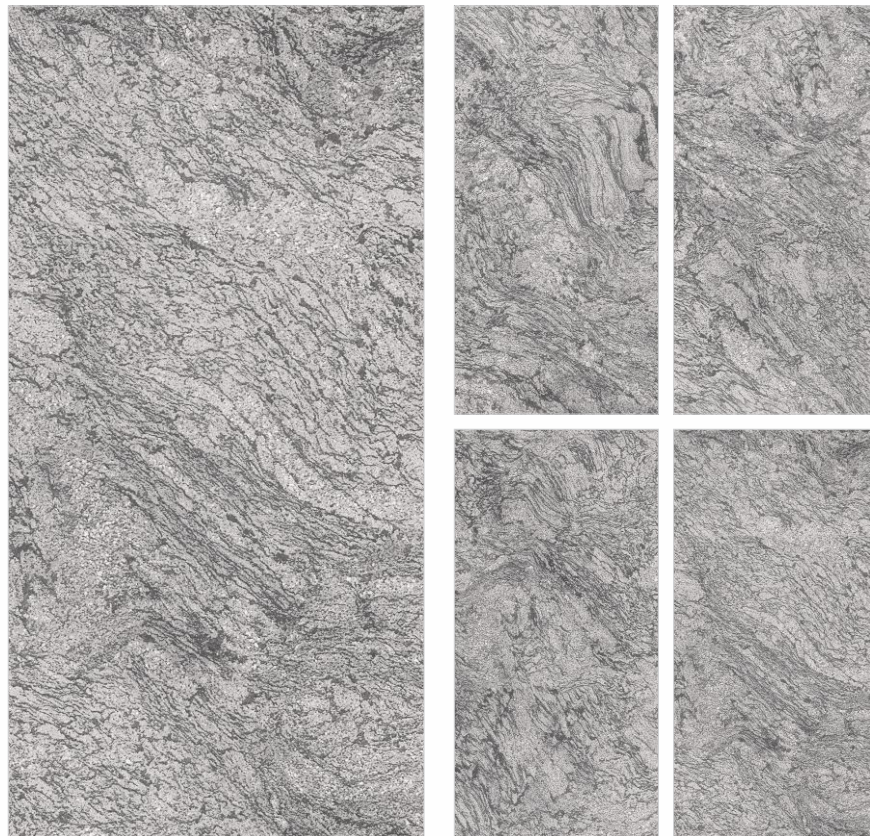
Size: **600x1200mm**
Surface: **MatryCER**
Thickness: **9mm**
Random: **6**

Also Available in
600x1200mmx9mm - MatryCER

←
**Back to
Index**

CLICK FOR
VIRTUAL
360°





Metiore Stone

Size: **600x1200mm**
Surface: **MatryCER**
Thickness: **9mm**
Random: **4**

←
Back to
Index

CLICK FOR
VIRTUAL
360°





Nicholas Travertine Ash

Size: **600x1200mm**
Surface: **MatryCER**
Thickness: **9mm**
Random: **6**



←
**Back to
Index**

CLICK FOR
VIRTUAL
360°





Nicholas Travertine Sand

Size: **600x1200mm**
Surface: **MatryCER**
Thickness: **9mm**
Random: **6**

←
Back to
Index

CLICK FOR
VIRTUAL
360°





Nicholas Travertine Stone

Size: **600x1200mm**
Surface: **MatryCER**
Thickness: **9mm**
Random: **6**

←
**Back to
Index**

CLICK FOR
VIRTUAL
360°





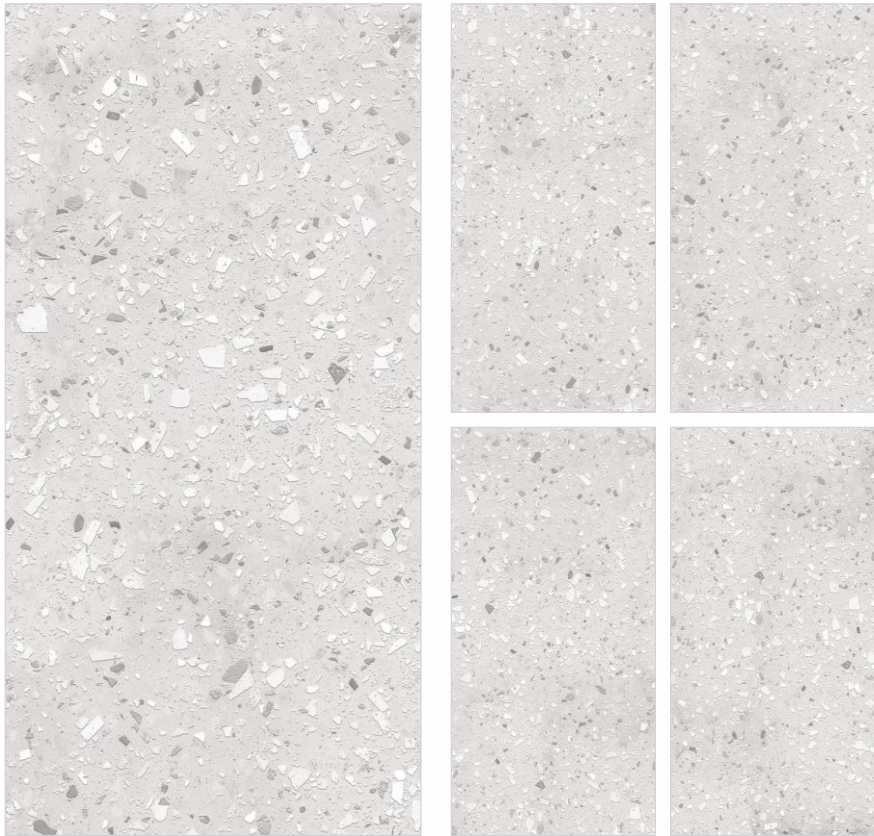
Olympian Gold

Size: **600x1200mm**
Surface: **MatryCER**
Thickness: **9mm**
Random: **4**

←
Back to
Index

CLICK FOR
VIRTUAL
360°





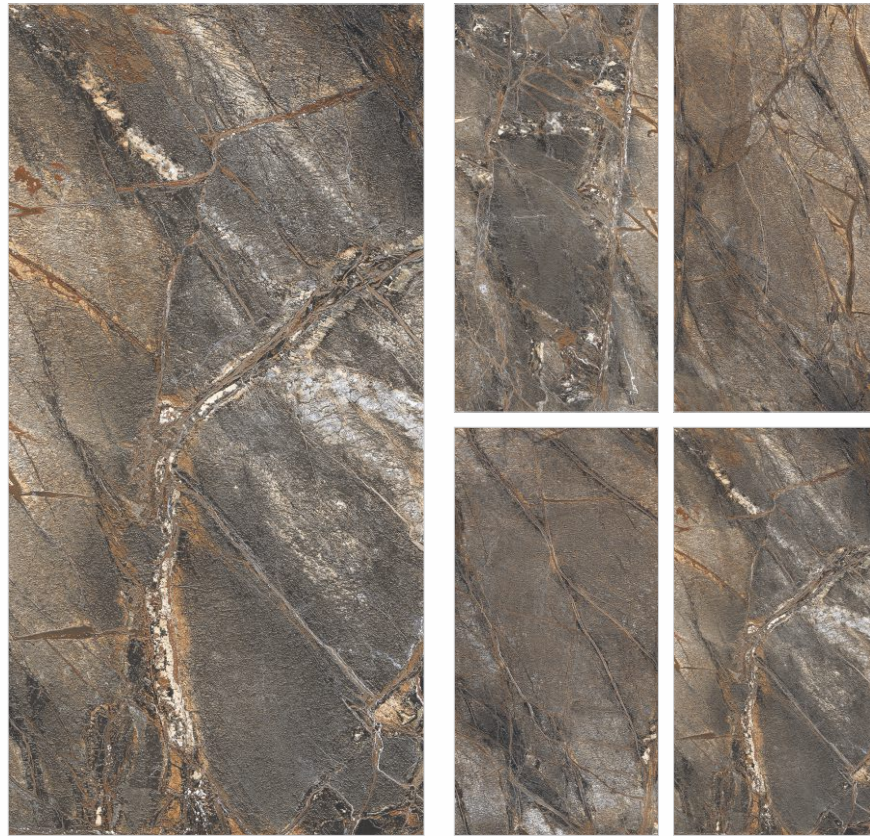
Sonar Dove

Size: **600x1200mm**
Surface: **MatryCER**
Thickness: **9mm**
Random: **5**

←
Back to
Index

CLICK FOR
VIRTUAL
360°





Techtonic Earth

Size: **600x1200mm**
Surface: **MatryCER**
Thickness: **9mm**
Random: **4**

←
Back to
Index

CLICK FOR
VIRTUAL
360°



TECHNICAL SPECIFICATIONS

GLAZED VITRIFIED TILES

CHARACTERISTICS	TEST METHOD	INTERNATIONAL STD ISO 13006/EN 176 GROUP BIa	PORTOCER VALUE
DIMENSION & SURFACE QUALITY			
Deviation in Length	ISO-10545-2	±0.6%	±0.2%
Deviation in Thickness	ISO-10545-2	±5%	±4%
Straightness of Sides	ISO-10545-2	±0.5%	±0.2%
Rectangularity	ISO-10545-2	±0.6%	±0.2%
Surface Flatness	ISO-10545-2	±0.5%	±0.2%
PHYSICAL & THERMAL PROPERTIES			
Water Absorption	ISO-10545-3	<0.5%	<0.2%
Breaking Strength	ISO-10545-11	>1300 N	>1800 N
Flexural Strength (Modulus of Rupture)	ISO-10545-4	>35 N/mm2	>40 N/mm2
Mohs Hardness	EN-101	Depends on the product	Min 3 (SilkenCER)
			Min 4 (PoliCER/PoliCER Glid/SilkenCER Glid/VantaCER/VantaCER Glid/GalaCER/GalaCER Gem)
			Min 5 (MattCER/MattCER Glid/MattCER Arc/SoftCER/OmniCER/OmniCER Glid)
			Min 6 (MattCER Echo/GritCER Echo/FlickCER Glid/FlickCER Melt)
			Min 7 (MattCER Melt/GritCER/GritCER Glid/ShapeCER/ShapeCER Glid/ShapeCER Mist/MatryCER)
			Min 8 (GripCER)
Resistance to Surface Abrasion	ISO-10545-7	Depends on the product	PE II (VantaCER/VantaCER Glid/GalaCER/GalaCER Gem)
			PE III (PoliCER/PoliCER Glid/SoftCER/FlickCER Glid/FlickCER Melt/SilkenCER/SilkenCER Glid/OmniCER/OmniCER Glid)
			PE III/IV (MatCER/MattCER Glid/MattCER Echo/MattCER Melt/MattCER Arc/ShapeCER/ShapeCER Glid
			/ShapeCER Mist/MatryCER/WoodNest)
			PE IV (GritCER Echo)
			PE V (GritCER/GritCER Glid/GripCER)
Skid Resistance (Slip Resistance)	ISO-10545-17	Depends on the product	<R9 (PoliCER/PoliCER Glid/VantaCER/VantaCER Glid/GalaCER/GalaCER Gem/SilkenCER/SilkenCER Glid/SoftCER)
			R9 (MattCER/MattCER Glid/MattCER Echo/MattCER Melt/MattCER Arc/GritCER/GritCER Glid
			/GritCER Echo/FlickCER Glid/FlickCER Melt/ShapeCER/ShapeCER Glid/ShapeCER Mist
			/MatryCER/OmniCER/OmniCER Glid)
			R10 (GripCER)
Frost Resistance	ISO-10545-12	Frost proof	Frost proof
Thermal Shock Resistance	ISO-10545-9	No Damage	No Damage
Moisture Expansion	ISO-10545-10	NIL	NIL
CHEMICAL PROPERTIES			
Resistance to low concentrations of acids and alkalis	ISO-10545-13	No Damage	GLA
Resistance to high concentrations of acids and alkalis	ISO-10545-13	No Damage	GHA
Resistance to household chemicals	ISO-10545-16	No Damage	Minimum GB
Resistance to staining	ISO-10545-14	No Damage	Class 3

PACKING DETAILS

Dimension (mm)	Thickness	No. of Pcs/Box	Coverage Area
600x1200mm	9mm	2 Pcs.	15.5 Sq. ft



8-A National Highway,
Matel Road, At. Dhuva, Morbi - 363 621, Gujarat, INDIA
info@portocertiles.com | +91 90817 11150

www.portocertiles.com